

# xPortal 2007

## Multi Function Access Control System

<http://www>

• Flexible • Efficient • Expandable •



➤ STANDALONE

➤ PC CONTROL

➤ CAR PARK ACCESS

➤ PROXIMITY READER WITH KEYPAD AND LCD

➤ UPGRADABLE TO BE USED  
IN MULTIDOOR NETWORK SYSTEM





# xPortal 2007

## System Supporting Feature



**XP-GT3200L**  
Reader with Touch Sense Keypad,  
FingerPrint, LCD  
and Built-In Controller & LAN



**XP-GTR1200L**  
Reader with Touch Sense Keypad,  
LCD and Built-In Controller & LAN



**XP-M1000X**  
Reader with Keypad,  
LCD and Built-In Controller



**XP-RDPRX**  
Proximity Reader

### Our Technology

#### Hardware

- Proximity Technology
- Reader Unit with LCD and Keypad
- Built-In Controller Function for Memory and Time Control
- Support Exit Reader Unit
- LCD Reader Unit can be used as Exit Reader
- Support External I/O for Interfacing with CCTV / Sirens \*
- Keep Transactions Data even Power Fails \*
- Can Program Directly at the Reader Keypad (or from PC Software)
- Can be linked to PC through LAN using MV-25 LAN Interface Unit \*
- Can be linked to PC directly through RS232 (1 Unit) or RS485 (max. 16 Unit per MCI or max. 128 Doors)
- Can be linked to the xPortalNet MultiDoor Controller through Interface for Larger Installation
- Mifare or ABA Track 2 Version are Available

#### Software

- Manage to handle huge record in good and stable condition \*
- Support Time Set and Time Zones
- Support Transaction Recording
- Support Transaction Memory Retention
- Can Program Directly at the PC Software (or at the Reader Keypad)
- xPortal 2007 Software with Access Management Automatic Data Collection, Time Attendance Function, Client-Server Version Available \*

#### Time Attendance \*\* (Note 1)

- Configurable export and allowance setting \*
- Flexible and highly configurable shift \*
- Support overnight shift \*
- Overtime and work hour calculation are available \*
- Designate specific Reader for Attendance
- Support Attendance Door Group by Staff
- Configurable export for integration with payroll system \*
- Configurable shift setting

#### Car Park

- Support 1 IN and 1 OUT Reader
- Support Car Park Vehicle Counting and Control
- Support Car Park Full Sign Activation

#### Finger Print

- Reliable Optical FingerPrint Sensor
- Support up to 3200 templates
- Can be used together with Card Access System with same software \*
- Multiple Operating Modes - FingerPrint + Card + Pin Codes \*

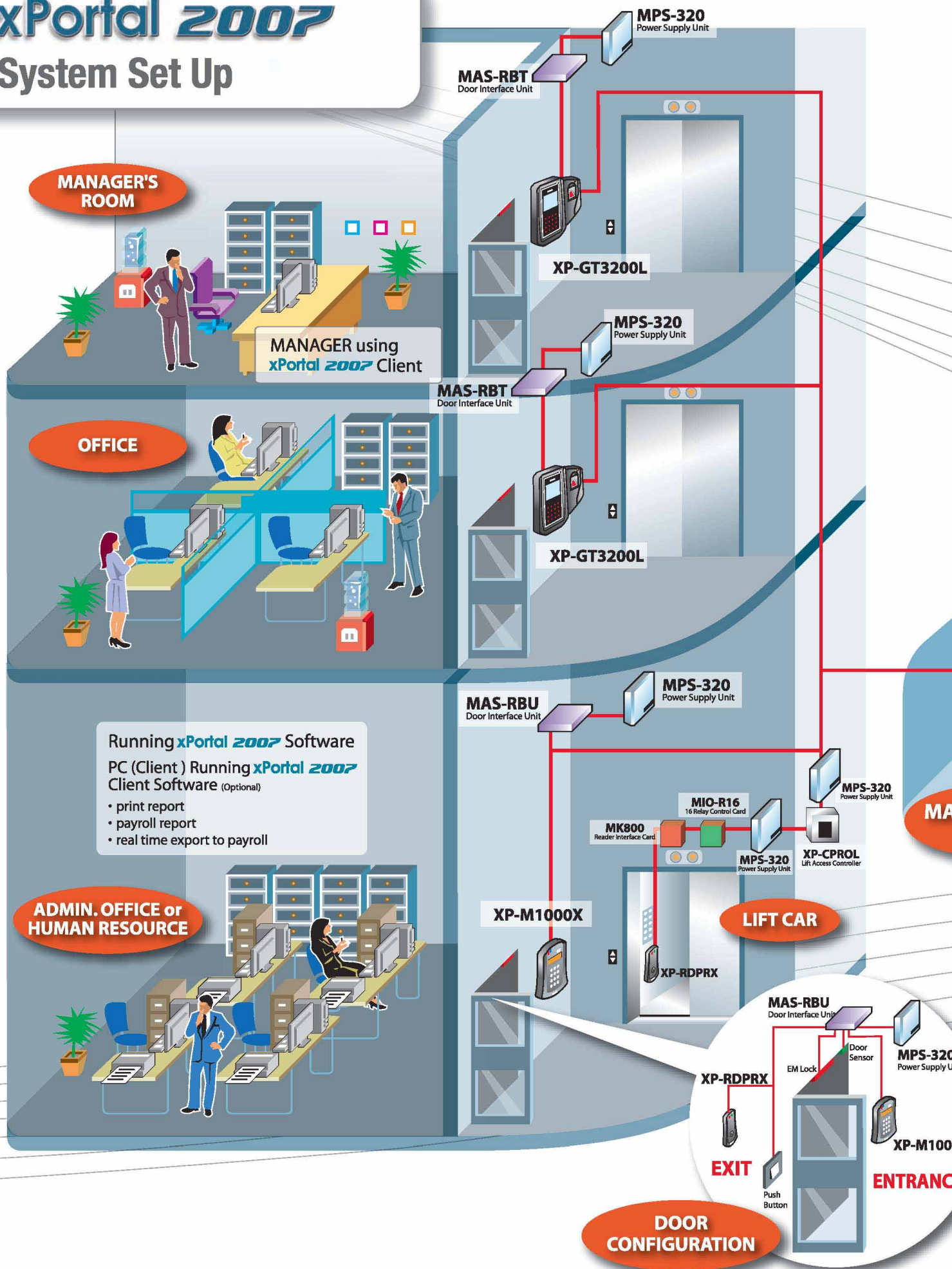
\*\*Note 1 : While we have designed the overnight shift attendance system with great details, we still can not guarantee that our standard system is able to meet all the requirements in the market. Please check with your agent on the suitability of our standard features for your intended requirement.

## Access Management Software

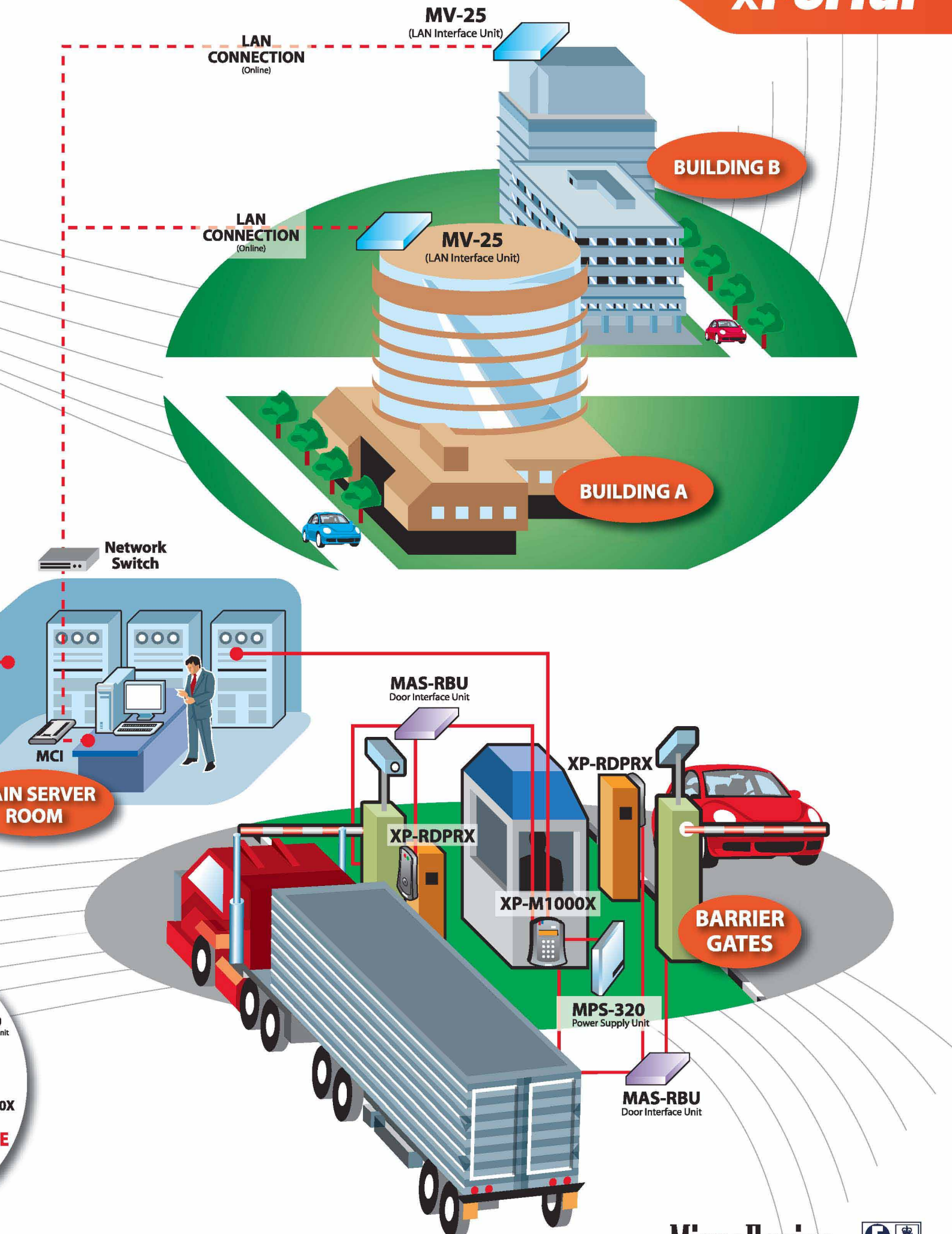


# xPortal 2007

## System Set Up







# xPortal *2007* Software Features

Item	Feature	Function
1	Operating System	Vista Business, XPPro, NT4, 2000 or Compatible (Microsoft .Net Framework v1.1 Required)
2	Max No. of Doors	1 (Direct RS232) 16 (with one MCI-XPC2007 or MCI-XPC2007/s Using RS485 MultiDrop) 128 (Maximum Configuration with Multiple Units of MCI-XPC2007 or MCI-XPC2007/s)
3	Controller Supported	MicroEngine's XP-M1000, XP-M1000X, XP-GT3200L XP-GTR1200L, XP-CPRO Multi-Door Controllers
4	Card Holder	2000
5	Transaction Records	Limited by Disk Space
6	Time Set	255
7	Time Zones	255
8	Holiday Dates	30
9	Access Levels	255
10	Overnight Shift	Yes
11	Overtime Calculate	Yes
12	Allowance Setting	Yes
13	AntiPassback	Yes
14	Automatic Transaction Retrieval	Yes
15	Password Controlled Software User	Yes
16	User Defined PIN Selection	Yes
17	Daily Attendance Reporting	Yes – Multi Shift Setting Late-In, Absent, Total Work Time, OT, Overnight Shift
18	Monthly Attendance Reporting	Yes – Summary of Attendance Status
19	Who's Still In Report	Yes (Multiple Door Selection)
20	Menu Accessibility Control	Yes
21	Dynamic Floor Plan	Yes
22	Online Events Viewing	Yes
23	Online Help	Yes
24	Controllers Supported	XP-M1000, XP-M1000X, XP-CPRO, XP-GT3200L, XP-GTR1200
25	Database	Firebird
26	Using Microsoft .Net Framework	Yes (v1.1)
27	Multi-Workstation	Yes, 3 Clients (MCI-XPC2007)
28	Can be Linked to PC for Software Control	Yes Use xPortal2007 Requires MCI-XPC2007 or MCI-XPC2007/s for Distance Longer than 50 Feet or More than 1 Unit of XP-M1000/XP-M1000X/XP-GT3200L, XP-GTR1200

### **xPortal 2007 System Features also Generating Reports for payroll system:**

### Attendance Schedule Listing Report

### Daily Attendance Report

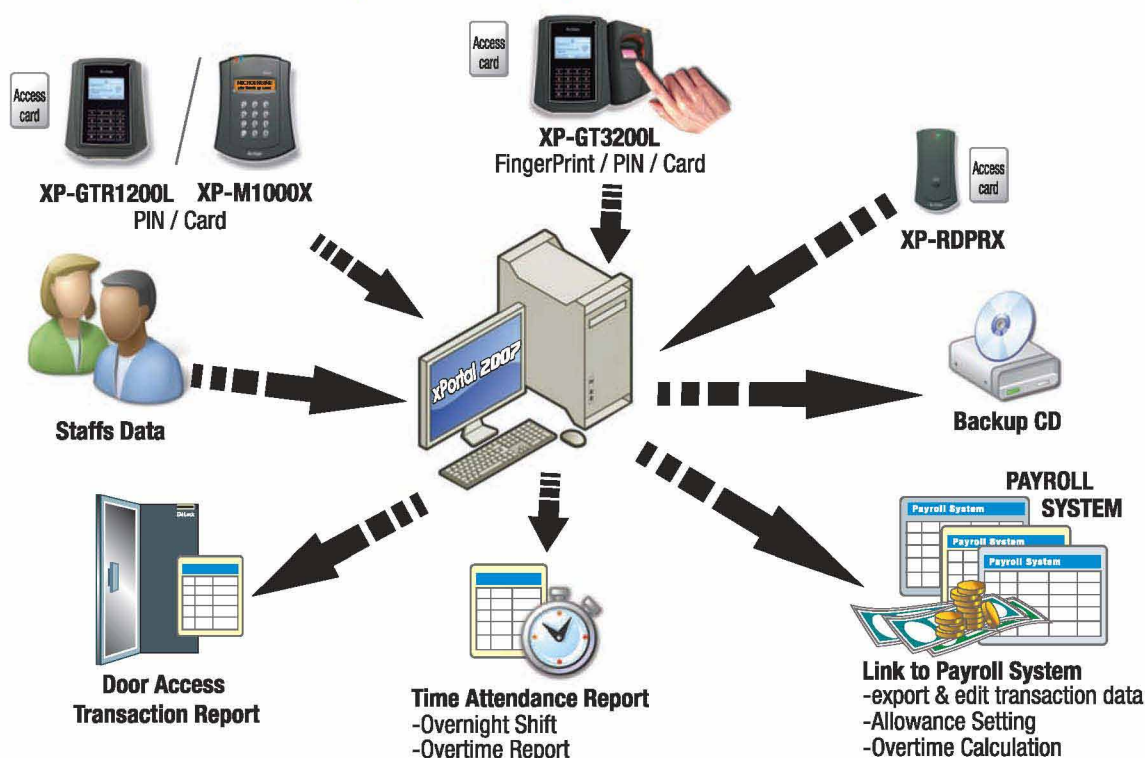
### Monthly Attendance Report

## Staff Time Shift Report

**\*\*Note 1 :** While we have designed the overnight Shift Attendance system with great details, we still can not guarantee that our standard system is able to meet all the requirements in the market. Please check with your agent on the suitability of our standard features for your intended requirement.

**\*\* Note 2 : Please use xPortal 2005 for non-overnight Shift Time Attendance requirements.**

## A Simple Connectivity Chart for xPortal 2007





## XP-M1000X Reader Features

Item	Feature	Function
1	Card User Memory	1000 (2000 in Car Park Access Mode)
2	Transaction Records	10000 (5000 in Car Park Access Mode)
3	Time Set	50
4	Time Zones	50
5	Holiday Dates	30
6	Built-In Real Time Clock	Yes
7	Keeps Data and Clock Even Power Fails	Yes (Data Up to 5 years / Time Up to 2 weeks)
8	Single Unit Reader, Keypad and Controller	Yes
9	Support Entry Reader	Yes (Car Park Access Mode)
10	Support Exit Reader	Yes
11	Support Exit Push Button	Yes (with Time Zone Control)
12	Support Wiegand 26 bit Reader	Yes
13	Support Antipassback	Yes
14	Access Operation Mode	Card Only, PIN Only, Card + PIN
15	Controller Operation Mode	1. Access Control 2. Time Attendance 3. Car Park
16	Auto PIN	10 Sets
17	Support Programming Through Keypad and LCD at the Reader	Yes
18	EEPROM Memory	160KB
19	Lock Control and Door Sensor Input	Yes (Through MAS-RBU Located Inside the Door)
20	Firmware Flash Memory	Yes
21	Onboard Buzzer	Yes
22	Communication Ports	RS232 or RS485
23	Configurable Lock Release Time	Yes (0-99 secs)
24	Configurable Door Open Time	Yes (0-99 secs)
25	Auto Lock Release Time Zone	Yes
26	Sensor and Output	Yes (with External Mio-44, 4 In 4 Out Card)
27	Power	12VDC
28	Can be Linked to PC for Software Control	Yes Use xPortal2007 Requires MCI-XPC2007/s or MCI-XPC2007 for distance longer than 50 feet or more than 1 unit of XP-M1000/XP-M1000X
29	Upgradable	Yes Can Be Upgraded for Use with Multi-Door XP-CPRO Controller, MK-800 Reader Interface and xPortal2007 System which Support up to 128 doors.
30	Dimension	152mm(H) x 122mm(W) x 32mm(D)

## XP-GT3200L Reader Features

Item	Feature	Function
1	Card User Memory Capacity	3,200
2	Fingerprint Template Capacity	3,200 1:N (1:3200)
3	Transaction Records Capacity	20,000
4	Communication	RS232, RS485 or LAN
5	Built in Real Time Clock with backup battery.	Yes (Retention of up to 1 week without external power)
6	Keypad	16 keys (with back light - Touch Sense)
7	Display	128x64 graphics display with back light
8	Dimension	131mm(H) x 158mm(W) x 65mm(D)
9	Input Voltage Supply	12Vdc
10	Time Set Records Capacity	99
11	Time Zone Records Capacity	99
12	Holiday Dates	30
13	Antipassback Enforcement	Yes (Local)
14	Built in Card Reader	Yes - EM Card or Mifare Card
15	Access Operation Mode	Card Only, Card + Pin, Pin Only, Fingerprint, Card + Fingerprint, Pin + Fingerprint, Card + Pin + Fingerprint.(Fingerprint verification only available when attached with optional XP-MF1)
16	Access Operation Mode (XP-GTR1200L)	Card Only, Card + Pin, Pin Only
17	Controller Operation Mode	1) Access Control Mode (default) a) Support external I/O interfacing with CCTV/Sirens for general purpose alarm functions (require MIO-44).
18	On site Programming through keypad	Yes
19	Lock Control	Yes (through an externally relay board located on secure side of door)
20	Door Sensor/ Push button Input	Yes (through an externally relay board located on secure side of door)
21	Configurable Lock Release Time	0 to 99 seconds
22	Configurable Door Open Time	0 to 99 seconds
23	Auto Lock Release Time Zone	Yes
24	Software Control	Yes (Software model xPortal2007 v1.2)

## Ordering Information

Item	Product code	Description
1	XP-GT3200L	FingerPrint Proximity Reader with LCD and Keypad Built-In Controller Function, 3,200 Users, 20,000 Transactions, TimeKeeping C/W MAS-RBT Door Interface Unit
2	XP-GT3200ABL	FingerPrint ISO14443 A/B Serial No Reader with LCD and Keypad Built-In Controller Function, 3,200 Users, 20,000 Transactions, TimeKeeping C/W MAS-RBT Door Interface Unit
3	XP-M1000X	Proximity Reader with LCD and Keypad Built-In Controller Function, 1,000 Card Users, 10,000 Transactions, TimeKeeping C/W MAS-RBU Door Interface Unit
4	XP-GTR1200L	Proximity Reader with LCD and Touch Sense Keypad + LAN 1200 Card Users, 10,000 Transactions
5	XP-M1000ABX	ISO14443 A/B Serial No Reader with LCD and Keypad Built-In Controller Function, 1,000 Card Users, 10,000 Transactions, TimeKeeping C/W MAS-RBU Door Interface Unit
6	XP-RDPRX	Proximity Reader
7	XP-RDMFX	ISO14443 A/B Serial No Reader with ABS Casing
8	Mio-44	4 In 4 Out Card
9	MCI-XPC2007/s	Standalone Software for Controlling up to 16 doors of XP-M1000, XP-GT3200L, XP-GTR1200L XP-M1000X, XP-CPRO Controllers
10	MCI-XPC2007	xPortal2007 Client/Server Software Main Signal Converter Unit. Max 3 Clients Max 128 Doors Max 8 Converter Unit Per Software
11	XPC2007-CLIENT	xPortal2007 Client Software Workstation License
12	MPS-320	3A Power Supply Unit with Low Power Cut-off
13	MPC-100	Proximity Card
14	MPC-S1K	Mifare Standard 1KBit ISO Card
15	MV-25	LAN to RS485 Converter (UTP Ethernet 10BaseT with TCP/IP Protocol)

## Computer Requirements

Item	Function	Description
1	CPU	Pentium IV 1.7GHz or Higher
2	RAM	1 GB SDRAM or Higher
3	Harddisk	20 GB
4	Monitor	1024 x 768 (65536 colors) or Better
5	Peripherals	Mouse, Keyboard, LPT Printer Port, Serial Port
6	OS	Client/Standalone : Microsoft Windows 2000/XP/Vista Business or Compatible Server: Microsoft Windows 2000/XP Pro/Vista Business or Compatible
7	UPS	Recommended to Install

For enquiries, please contact:

Specifications subject to change without prior notice